



## OPTISWIRL 4070 C Technical Datasheet

Vortex flowmeter

- Integrated pressure and temperature compensation
- Temperature compensation for saturated steam included as standard
- All OPTISWIRL versions in 2-wire technology



## The all-in-one solution

The **OPTISWIRL 4070 C** is the only vortex flowmeter with integrated pressure and temperature compensation in 2-wire technology. The **OPTISWIRL 4070 C** provides reliable measurement of operating, standard volumetric and mass flow of conductive and non-conductive liquids, gases and vapours, even with fluctuating pressures and temperatures.



- ① Pressure sensor
- ② Shut-off valve
- ③ Fully welded stainless steel design
- ④ Converter with Intelligent Signal Processing [ISP]

## Highlights

- 2-wire device with integrated pressure and temperature compensation
- Non-wearing, fully welded stainless steel construction with high corrosion, pressure and temperature resistance
- Optimal process reliability thanks to Intelligent Signal Processing (ISP) - stable readings, free of external perturbations
- Ready to use immediately thanks to plug & play
- Maintenance-free sensor design
- PACTware available at no extra cost
- Pressure and temperature can be called up via HART

## Industries

- Chemical
- Oil & Gas
- Power plants
- Iron, Steel and Metal
- Paper and Pulp
- Water
- Automotive

## Applications

- Vapour and saturated steam measurement
- Steam boiler monitoring
- Monitoring of compressor output
- Measurement of consumption in compressed air systems
- Measurement of consumption of industrial gases
- SIP and CIP processes in the food, beverage and pharmaceutical industries
- Measurement of conductive and non-conductive liquids

## Options and variants

### 1. The universal device with temperature compensation for saturated steam integrated as standard



The OPTISWIRL 4070 as a compact flowmeter in a flange version is suitable for universal use in measuring liquids, gases and vapours.

The temperature compensation for saturated steam is integrated as standard, thus enabling direct compensation of the density; the mass and energy can also be measured.

Here ISP (Intelligent Signal Processing) provides stable measurement results free of external perturbations.

### 2. The easy to install sandwich version with optimised centring rings



The OPTISWIRL 4070 as a compact flowmeter in a sandwich version is suitable for universal use in the measurement of liquids, gases and vapours. The temperature compensation for saturated steam is integrated as standard.

The flowmeter is provided with additional optimised centring rings. The OPTISWIRL can be aligned centrally by turning the centring rings, eliminating any offset between the OPTISWIRL and the pipeline.

### 3. The only 2-wire device with integrated pressure and temperature compensation



The OPTISWIRL 4070 as a flange or sandwich flowmeter is optionally available with integrated pressure and temperature compensation for gases, wet gases, gas mixtures or vapours. The advantages of this unique design couldn't be clearer:

- No additional cost-intensive installation of pressure and temperature sensors
- No additional cabling work
- No faulty measurement results, because pressure, temperature and volume flow can be read at a single point
- Direct measurement of mass and/or energy

### 4. The highest process availability thanks to optional shut-off valve



As an option, KROHNE can supply the OPTISWIRL 4070 with a shut-off valve to allow the pressure sensor to be exchanged without interrupting the process.

What is more, the pressure sensor can be shut off for the purpose of pressure or leak testing of the pipeline.

Using the built-in two-way valve, the pressure sensor can also be calibrated and tested at a later time.

## 5. Dual measurement for twofold reliability



The OPTISWIRL 4070 is optionally available as a dual version.

This is a genuine redundant system with two independent sensors and two converters.

This provides twofold functional reliability and availability of the measurement.

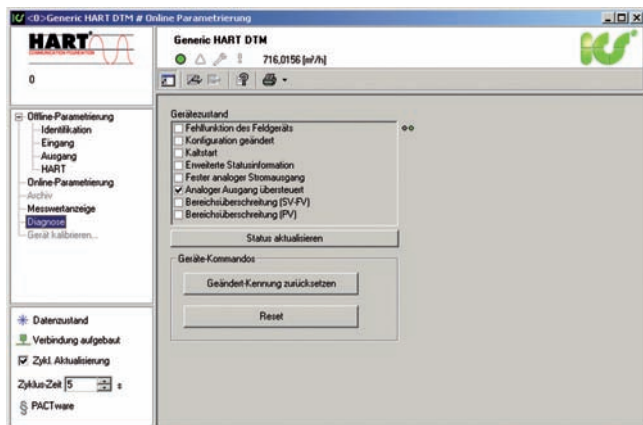
This variant is optimally suited for measurements in multiproduct pipelines.

In such pipelines, two different products are moved through one after the other.

Here one converter can be programmed for one product, and the other converter for the other product.

## PACTware • simple and intuitive

### PACTware diagnosis

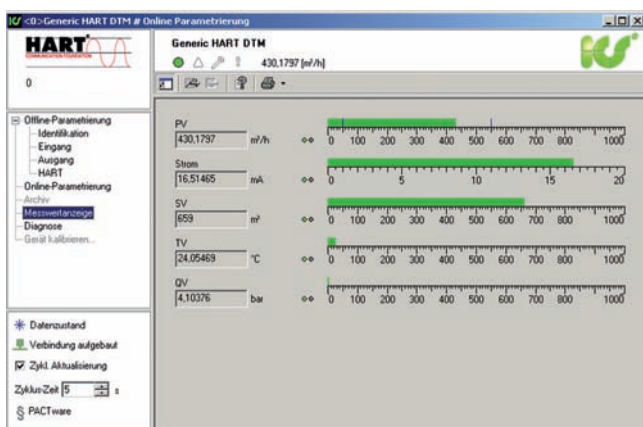


### PACTware

The OPTISWIRL 4070 is PACTware-ready. Each device is supplied ex factory with the appropriate DTM (Device Type Manager). A DTM is a device driver containing a user interface optimised for each device, and which makes the device functionality available independently of the field bus protocol.

A graphical user interface enables operation and configuration of the meter. Simple, program-based setup of devices is thus possible from the control room, even without a display or keyboard. The best possible operator control concepts have been implemented, optimised for the user's requirements.

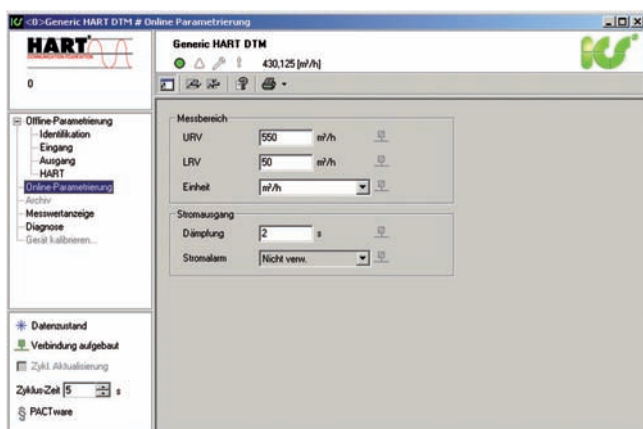
### PACTware reading display



### Features:

- Displays measured values
- Records measured information during operation
- Shows status of device
- Stepwise setup
- Displays summary of setup selection for final checking

### PACTware online parameter configuration



## Technical data

### Measuring system

Application range	Flow measurement of liquids and gases
Operating method / measuring principle	Karman vortex street
Measured value	
Primary measured value	Number of separated vortices
Secondary measured value	Operating and standard volumetric flow, mass flow

### Measuring accuracy

Accuracy	Re $\geq$ 20000 $\pm$ 0.75% for liquids
	Re $\geq$ 20000 $\pm$ 1% for gases and vapors
	10000 < Re < 20000 $\pm$ 2% for liquids, gases and vapors ①
Repeatability	$\pm$ 0.1%
Stability	$\pm$ 0.1% over a periode of 1 year

### Operating conditions

Ambient temperature	-20...+65°C Ex version
	-40...+85°C (non Ex version)
Storage temperature	-50...+85°C
Product temperature	-40...+240°C
Measured substances	Liquids gases and vapour
Density	taken into consideration when rating
Viscosity	< 10 cP
Reynold's number	10000...2300000
Product pressure limit	max. 100 bar, higher pressures on request

### Inlet conditions

Inlet run	$\geq$ 20 x DN
Outlet run	$\geq$ 5 x DN
Dimensions and weights	see chapter dimensions and weights

### Materials

Sensor	1.4404/316L Hastelloy C4
Housing	Aluminium; 1.4404/316L in preparation
Sensor gasket	1.4435/316L / FPM; Hastelloy C4 / FFKM

① Accuracy pressure- and temperature-compensated Re  $\geq$  20000 +/- 1.5% for gases and vapors; 10000 < Re < 20000 +/- 2.5% for gases and vapors



## Technical data

### Power supply

Ex- version	14...30 VDC
Non Ex- version	14...36 VDC

### Current output

Measuring range	4...20 mA
Over Range	20.8 mA +/- 1% (105% +/- 1%)
Load	Minimal 100 Ω; maximal $R_{ges} = ((U_B - 14 V) / 22 mA)$
Error signal	NAMUR NE 43
	(-2.5 +/- 0.5%)
	20.5 +/- 1.0% (105% +/- 1.0%)
Maximal	22 mA (112.5%)
Multidrop mode	4 mA

### Digital output

HART	
Physical layer	FSK
Device category	Transmitter

### Pulse output

Pulse output	Pulse frequency max. 0.5 Hz
Power supply non- Ex	24 VDC as NAMUR or open < 1 mA, maximal 36 V, closed 100 mA, U < 2 V
Power supply Ex	24 VDC as NAMUR or open < 1 mA, maximal 30 V, closed 100 mA, U < 2 V

### Display and operating interface

Local display	2 lines, 10 characters per line
Operating and display languages	German, English, French

### Process connections

Process connection	EN or ASME flanges
Flange version	DN 15...300; ½...12"
Sandwich version	DN 15...100; ½...4"

### Protection category

Protection category	IP 66/67
---------------------	----------

### Approvals

ATEX	ATEX II 2G EEx d ia [ia] IIC T6
FM	Class 1 Div. 1 <b>1</b>

**1** Pending



## Flow table

### Measuring range limits

Size		Qmin	Qmax	Qmin	Qmax
DN to EN 1092-1	DN to ASME B16.5	EN 1092-1 [m <sup>3</sup> /h]	EN 1092-1 [m <sup>3</sup> /h]	ASME B16.5 [m <sup>3</sup> /h]	ASME B16.5 [m <sup>3</sup> /h]

### Water

15	1/2	0.45	5,07	0.44	4.94
25	1	0.81	11.40	0.81	11.40
40	1 1/2	2.04	28.58	2.04	28.58
50	2	3.53	49.48	3.53	49.48
80	3	7.74	108.37	7.74	108.37
100	4	13.30	186.22	13.30	186.21
150	6	30.13	421.86	30.13	421.86
200	8	52.66	737.18	52.66	737.18
250	10	81.43	1140.02		
300	12	114.83	1607.61		
Values based on water at 20°C					

### Air

15	1/2	6.79	32,56	6.71	32,56
25	1	10.20	113,94	10.20	113,94
40	1 1/2	25.30	326.63	25.35	326.63
50	2	43.89	565.49	43.89	565.49
80	3	96.14	1238.64	96.14	1238.60
100	4	165.14	2128.27	165.19	2238.30
150	6	374.23	4821.57	374.23	4821.60
200	8	653.95	8425.53	653.95	8425.50
250	10	977.16	13028.81		
300	12	1377.95	18372.66		
Values based on air at 20°C and 1.013 bar abs					

### Flow rate limits

Product	Nominal diameters		Minimum flow rates	Maximum flow rates
	to EN	to ASME	[m/s]	[m/s]
Liquids	DN15...DN300	DN 1/2"...DN12"	$0.5 \times (998 / \rho)^{0.5}$ ①	$7 \times (998 / \rho)^{0.47}$ ①
Gas, vapor	DN15...DN300	DN 1/2"...DN12"	$6 \times (1.29 / \rho)^{0.5}$ ②	$7 \times (998 / \rho)^{0.47}$ ③

① Minimum flow rates 0.4m/s - maximum flow rates 10m/s

② Minimum flow rates 2m/s - maximum flow rates 80m/s

③ Minimum flow rates 2m/s - maximum flow rates 80m/s; DN15 - 45 m/s and DN25 - 70 m/s

$\rho$  = operating density [kg/m<sup>3</sup>]

## Measuring range saturated steam: 1-7 bar

Overpressure [bar]		1		3.5		5.2		7	
Density [kg/m³]		1.13498		2.4258		3.27653		4.16732	
Temperature °C		120.6		148.2		160.4		170.6	
Flow		min	max	min	max	min	max	min	max
DN to EN 1092-1	DN to ASME B16.5	[kg/h]	[kg/h]	[kg/h]	[kg/h]	[kg/h]	[kg/h]	[kg/h]	[kg/h]
15	0.5	5.25	32,56	7.68	78,98	8.93	106,68	10.06	135,69
25	1	11.82	130,29	17.28	276,40	20.09	426,89	22.66	474,82
40	1.5	29.64	370.71	43.33	792.33	50.63	1070.2	56.8	1361.2
50	2	51.31	641.82	75.02	1371.8	87.19	1852.8	98.33	2356.6
80	3	112.41	1405.8	164.33	3004.7	191	4058.4	215.39	5161.8
100	4	193.14	2415.5	282.36	5162.7	328.16	6973.3	370.09	8869.2
150	6	437.56	5472.4	639.69	11696	743.45	15798	838.44	20093
200	8	764.62	9562.8	1117.8	20439	1299.2	27606	1465.1	35112
250	10	1177.07	14655.07	1716.4	31161.66	1993.6	42039.68	2247.44	53426.86
300	12	1659.85	20665.94	2420.39	43942.81	2811.29	58282.52	3169.24	75340.22

## Measuring range saturated steam: 10.5 - 20 bar

Overpressure [bar]		10.5		14		17.5		20	
Density [kg/m³]		5.88803		7.60297		9.31702		10.5442	
Temperature °C		186.2		198.5		208.5		215	
Flow		min	max	min	max	min	max	min	max
DN to EN 1092-1	DN to ASME B16.5	[kg/h]	[kg/h]	[kg/h]	[kg/h]	[kg/h]	[kg/h]	[kg/h]	[kg/h]
15	0.5	12.78	191,71	16.51	247,55	20.23	303,36	22.89	343,32
25	1	26.93	670,88	30.6	866,28	33.87	1061,58	36.04	1201,41
40	1.5	67.51	1878.2	76.72	2150.7	84.93	2395.3	90.35	2557.7
50	2	116.89	3251.7	132.82	3723.4	147.03	4147	156.42	4428.1
80	3	256.03	7122.4	290.93	8155.8	322.06	9083.7	342.62	9699.3
100	4	439.91	12238	499.9	14013	553.38	15608	588.69	16666
150	6	996.62	27725	1132.5	31747	1253.7	35359	1333.7	37756
200	8	1741.6	48449	1979	55478	2190.7	61789	2330.6	65977
250	10	2670.28	66065.16	3033.45	75626.77	3357.4	84214.04	3571	89910.45
300	12	3765.52	93162.2	4277.65	106645.5	4737.45	118754	5036.01	126787.8

## Measuring range saturated steam: 15 - 100 psig

Overpressure [bar]		15		50		75		100	
Density [kg/m <sup>3</sup> ]		0.0719		0.1497		0.2036		0.2569	
Temperature °C		249.98		297.86		320.36		338.184	
Flow		min	max	min	max	min	max	min	max
DN to EN 1092-1	DN to ASME B16.5	[lbs/h]	[lbs/h]	[lbs/h]	[lbs/h]	[lbs/h]	[lbs/h]	[lbs/h]	[lbs/h]
15	0.5	11.6	82,70	16.83	1720,50	19.62	233,93	22.04	295,12
25	1	26.25	289,40	37.86	602,09	44.15	818,63	49.59	1032,76
40	1.5	65.81	829.61	94.92	1726	110.68	2346.7	124.32	2960.5
50	2	113.94	1436.3	164.34	2988	191.63	4062.9	215.23	5125.6
80	3	249.57	3146.1	360	6545.3	419.74	8899.4	471.45	11227
100	4	428.81	5405.7	618.51	11246	721.21	15291	810.06	19291
150	6	971.47	12246	1401.2	25478	1633.9	34642	1835.2	43703
200	8	1697.6	21400	2448.6	44523	2855.2	60536	3206.9	76369
250	10	2562.72	32308.86	3777.85	68699.63	4371.7	92681.52	4946.03	117785.2
300	12	3613.84	45560.54	5327.61	96877.61	6164.78	130695.4	6974.68	166096.6

## Measuring range saturated steam: 150 - 300 psig

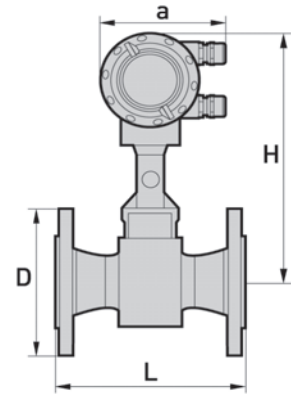
Overpressure [bar]		150		200		250		300	
Density [kg/m <sup>3</sup> ]		0.3627		0.4681		0.5735		0.6792	
Temperature °C		366.08		388.04		406.22		422.06	
Flow		min	max	min	max	min	max	min	max
DN to EN 1092-1	DN to ASME B16.5	[lbs/h]	[lbs/h]	[lbs/h]	[lbs/h]	[lbs/h]	[lbs/h]	[lbs/h]	[lbs/h]
15	0.5	27.79	416,68	35.86	573,83	43.94	658,89	52.04	780,29
25	1	58.93	1458,16	66.94	1875,90	74.1	2089	80.63	2284.9
40	1.5	147.72	4107.2	167.83	4702.8	185.76	5237	202.15	5728
50	2	255.75	7111.9	290.56	8141.9	321.6	9066.8	350	9917
80	3	560.19	15578	636.44	17834	704.43	19860	766.6	21722
100	4	962.54	26766	1093.5	30643	1210.4	34124	1317.2	37324
150	6	2180.6	60639	2477.4	69421	2742.1	77307	2984	84556
200	8	3810.6	105960	4329.2	121310	4791.7	135090	5214.5	147760
250	10	5876.29	145648.6	6674.55	166728.3	7386.91	185660	7680.16	198218.4
300	12	8286.49	205387.2	9412.15	235112.9	10416.7	261809.6	10830.22	279518.9

## Dimensions and weights (metric)

### Flange version EN 1092-1

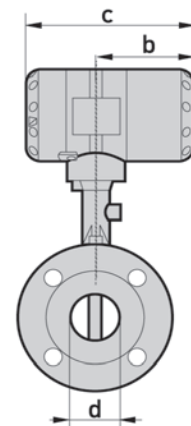
Size	Pressure rating	Dimensions [mm]					Weight [kg]	
		DN	PN	d	D	L	H	l
15	40	17.3	95	200	265	144	6.1	5.5
15	100	17.3	105	200	265	144	7.1	6.5
25	40	28.5	115	200	265	144	7.9	7.3
25	100	28.5	140	200	265	144	9.9	9.3
40	40	43.1	150	200	270	144	10.8	10.2
40	100	42.5	170	200	270	144	14.8	14.2
50	16	54.5	165	200	275	144	12.7	12.1
50	40	54.5	165	200	275	144	12.9	12.3
50	63	54.5	180	200	275	144	16.9	16.3
50	100	53.9	195	200	275	144	18.4	17.8
80	16	82.5	200	200	290	154	17.4	16.8
80	40	82.5	200	200	290	154	19.4	18.8
80	63	81.7	215	200	290	154	23.4	22.8
80	100	80.9	230	200	290	154	27.4	26.8
100	16	107.1	220	250	310	164	22	21.4
100	40	107.1	235	250	310	164	25	24.4
100	63	106.3	250	250	310	164	30	29.4
100	100	104.3	265	250	310	164	36	35.4
150	16	159.3	285	300	325	174	35.8	35.2
150	40	159.3	300	300	325	174	41.8	41.2
150	63	157.1	345	300	325	174	59.8	59.2
150	100	154.1	355	300	325	174	67.8	67.2
200	10	206.5	340	300	350	194	38.4	37.8
200	16	206.5	340	300	350	194	38.4	37.8
200	25	206.5	360	300	350	194	47.4	46.8
200	40	206.5	375	300	350	194	55.4	54.8
250	10	260.4	395	380	370	224	58.0	57.4
250	16	260.4	405	380	370	224	59.0	58.4
250	25	258.8	425	380	370	224	75.0	74.4
250	40	258.8	450	380	370	224	93.0	92.4
300	10	309.7	445	450	395	244	76.3	75.7
300	16	309.7	460	450	395	244	82.8	82.2
300	25	307.9	485	450	395	244	99.3	98.7
300	40	307.9	515	450	395	244	128.1	127.5

Side view



a = 133 mm / 5.24 inches

Front view

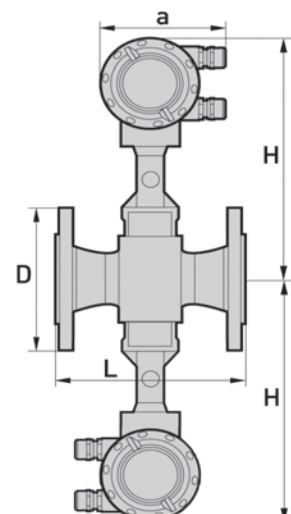


b = 105 mm / 4.13 inches

c = 179 mm / 7.05 inches

**Option:**

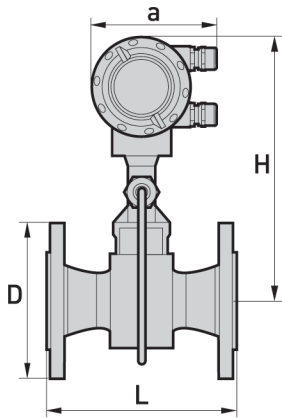
Version with two transmitters



Specified weight + 2.80 kg

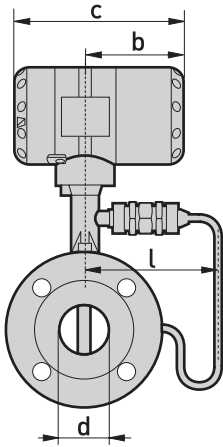
Flange version ASME B16.5

Side view



a = 133 mm / 5.24 inches

Front view



b = 105 mm / 4.13 inches

c = 179 mm / 7.05 inches

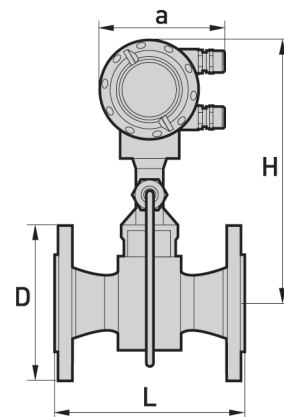
Size	Pressure rating	Dimensions [mm]					Weight [kg]	
		DN	PN	d	D	L	H	l
1/2	150	15.8	90	200	265	144	5.1	4.5
1/2	300	15.8	95	200	265	144	5.5	4.9
1/2	600	13.9	95	200	265	144	5.7	5.1
1	150	26.6	110	200	265	144	6.8	6.2
1	300	26.6	125	200	265	144	7.8	7.2
1	600	24.3	125	200	265	144	8.1	7.5
1 1/2	150	40.9	125	200	270	144	8.9	8.3
1 1/2	300	40.9	155	200	270	144	11	10.4
1 1/2	600	38.1	155	200	270	144	12	11.4
2	150	52.6	150	200	275	144	11.6	11
2	300	52.6	165	200	275	144	13	12.4
2	600	49.3	165	200	275	144	14.5	13.9
3	150	78	190	200	290	154	20.4	19.8
3	300	78	210	200	290	154	23.4	22.8
3	600	73.7	210	200	290	154	24.4	23.8
4	150	102.4	230	250	310	164	24	23.4
4	300	102.4	255	250	310	164	32	31.4
4	600	97.2	275	250	310	164	41	40.4
6	150	154.2	280	300	325	174	36.8	36.2
6	300	154.2	320	300	325	174	51.8	51.2
6	600	146.3	355	300	325	174	76.8	46.2
8	150	202.7	345	300	350	194	50.6	50.0
8	300	202.7	380	300	350	194	75.4	74.8
10	150	254.5	405	380	370	224	75.0	74.4
10	300	254.5	455	380	370	224	107.0	106.4
12	150	304.8	485	450	395	244	106.9	106.3
12	300	304.8	520	450	395	244	151.9	151.3

## Dimensions and weights (Imperial)

### Flange version ASME B16.5

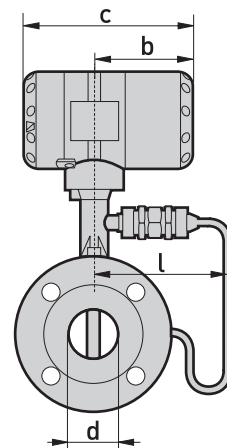
Size	Pressure rating	Dimensions [inches]					Weight [lb]	
		DN	PN	d	D	L	H	l
1/2	150	0.62	3.54	7.87	10.43	5.67	11.24	9.92
1/2	300	0.62	3.74	7.87	10.43	5.67	12.13	10.8
1/2	600	0.54	3.74	7.87	10.43	5.67	12.57	11.24
1	150	1.05	4.33	7.87	10.43	5.67	14.99	13.67
1	300	1.05	4.92	7.87	10.43	5.67	17.2	15.87
1	600	0.96	4.92	7.87	10.43	5.67	17.86	16.53
1 1/2	150	1.61	4.92	7.87	10.63	5.67	19.62	18.3
1 1/2	300	1.61	6.1	7.87	10.63	5.67	24.25	22.93
1 1/2	600	1.5	6.1	7.87	10.63	5.67	26.46	25.13
2	150	2.07	5.91	7.87	10.83	5.67	25.57	24.25
2	300	2.07	6.5	7.87	10.83	5.67	28.66	27.34
2	600	1.94	6.5	7.87	10.83	5.67	31.97	30.64
3	150	3.07	7.48	7.87	11.42	6.06	44.97	43.65
3	300	3.07	8.27	7.87	11.42	6.06	51.59	50.26
3	600	2.9	8.27	7.87	11.42	6.06	52.79	52.47
4	150	4.03	9.06	9.84	12.21	6.46	52.91	51.59
4	300	4.03	10.04	9.84	12.21	6.46	70.55	69.22
4	600	3.83	10.83	9.84	12.21	6.46	90.39	89.07
6	150	6.07	11.02	11.81	12.8	6.85	81.13	79.81
6	300	6.07	12.6	11.81	12.8	6.85	114.2	112.88
6	600	5.76	13.98	11.81	12.8	6.85	169.31	101.85
8	150	7.98	13.58	11.81	13.78	7.64	146.39	145.65
8	300	7.98	14.96	11.81	13.78	7.64	190.32	189.65
8	600	7.63	16.54	11.81	13.78	7.64	331.57	330.25
10	150	10.02	15.51	14.96	14.57	8.82	197.09	195.77
10	300	10.02	17.91	14.96	14.57	8.82	252.21	239.86
10	600	9.56	20.08	14.96	14.57	8.82	419.76	418.43
12	150	12	19.09	17.72	15.55	9.61	318.34	317.02
12	300	12	20.47	17.72	15.55	9.61	415.35	414.02
12	600	11.37	22.05	17.72	15.55	9.61	543.21	541.89

Side view



a = 133 mm / 5.24 inches

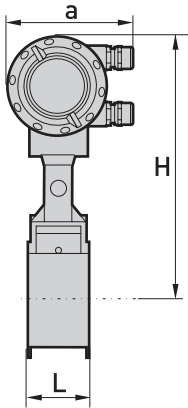
Front view



b = 105 mm / 4.13 inches  
c = 179 mm / 7.05 inches

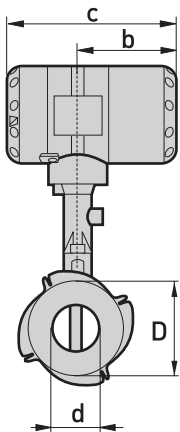
### Dimensions and weights (metric)

Front view



a = 133 mm / 5,24 inch

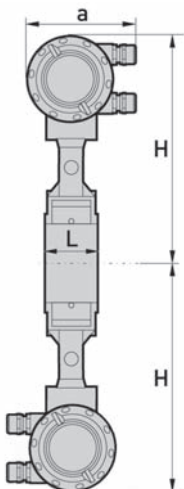
Side view



b = 105 mm / 4,13 inch

c = 179 mm / 7,05 inch

**Option:** Version with two transmitters



Specified weight + 2.80 kg

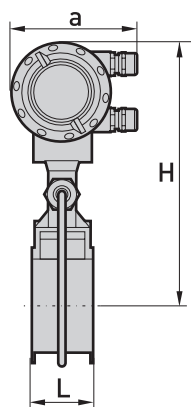
### Sandwich version EN

Size	Pressure rating	Dimensions [mm]					Weight [kg]	
		DN	PN	d	D	L	H	l
15	100	16	45	65	265	144	4.1	3.5
25	100	24	65	65	265	144	4.9	4.3
40	100	38	82	65	270	144	5.5	4.9
50	100	50	102	65	275	144	6.6	6
80	100	74	135	65	290	155	8.8	8.2
100	100	97	158	65	310	164	10.1	9.5



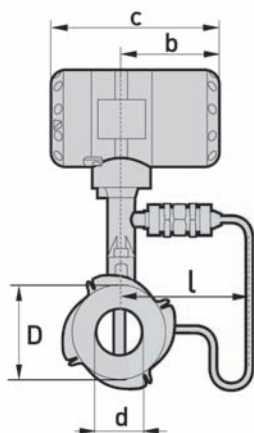
## Dimensions and weights (Imperial)

Front view



a = 133 mm / 5,25 inch

Side view



b = 105 mm / 4,13 inch

c = 179 mm / 7,05 inch

### Sandwich version ASME

Size	Pressure rating	Dimensions [inches]					Weight [lb]	
		DN	PN	d	D	L	H	l
1/2	150	0.63	1.77	2.56	10.43	5.67	9.04	7.72
1/2	300	0.63	1.77	2.56	10.43	5.67	9.04	7.72
1/2	600	0.55	1.77	2.56	10.43	5.67	9.04	7.72
1	150	0.94	2.56	2.56	10.43	5.67	10.8	9.48
1	300	0.94	2.56	2.56	10.43	5.67	10.8	9.48
1	600	0.94	2.56	2.56	10.43	5.67	10.8	9.48
1 1/2	150	1.5	3.23	2.56	10.63	5.67	12.13	10.8
1 1/2	300	1.5	3.23	2.56	10.63	5.67	12.13	10.8
1 1/2	600	1.5	3.23	2.56	10.63	5.67	12.13	10.8
2	150	1.97	4.02	2.56	10.83	5.67	14.55	13.23
2	300	1.97	4.02	2.56	10.83	5.67	14.55	13.23
2	600	1.97	4.02	2.56	10.83	5.67	14.55	13.23
3	150	2.91	5.31	2.56	11.42	6.1	19.4	18.08
3	300	2.91	5.31	2.56	11.42	6.1	19.4	18.08
3	600	2.91	5.31	2.56	11.42	6.1	19.4	18.08
4	150	3.82	6.22	2.56	12.21	6.46	22.27	20.94
4	300	3.82	6.22	2.56	12.21	6.46	22.27	20.94
4	600	3.82	6.22	2.56	12.21	6.46	22.27	20.94

## Order form

You can help us to assist you as quickly as possible by giving us a few items of information.

Then just fax them to us. Your personal KROHNE consultant will contact you within 24 hours.

### Device data

Nominal connection diameter:			
Pressure rating:			
Sealing surface:			
Pipeline material			
Connection type	<input type="checkbox"/> Flange	<input type="checkbox"/> Sandwich	
Construction:	<input type="checkbox"/> Compact	<input type="checkbox"/> Separate, 5 m cable length	<input type="checkbox"/> Separate, 10 m cable length
Display	<input type="checkbox"/> With	<input type="checkbox"/> Without	
Approvals	<input type="checkbox"/> No EEx	<input type="checkbox"/> ATEX II 2G EEx d ia [ia] IIC T6	<input type="checkbox"/> FM Class 1 Div. 1

### Rating data

Product:	
Operating pressure:	
Rated pressure:	
Operating temperature:	
Rated temperature:	
Operating density:	
Viscosity:	
Flow rate range:	
Comments:	

### Contact data

Company:	
Contact person:	
Telephone number:	
Fax number:	
E-mail:	





## KROHNE Product Overview

- Electromagnetic flowmeters
- Variable area flowmeters
- Mass flowmeters
- Ultrasonic flowmeters
- Vortex flowmeters
- Flow controllers
- Level measuring instruments
- Pressure gauges
- Temperature measuring instruments
- Water solutions & analysis
- Oil and gas turnkey solutions

## Addresses:

### Germany

#### Northern sales office

KROHNE Messtechnik GmbH & Co. KG  
Bremer Str. 133  
D-21073 Hamburg  
Phone: +49 (0)40 767 3340  
Fax: +49 (0)40 767 33412  
nord@krohne.de  
ZIP code: 10000 - 29999, 49000 - 49999

#### Western and middle sales office

KROHNE Messtechnik GmbH & Co. KG  
Ludwig-Krohne-Straße  
D-47058 Duisburg  
Phone: +49 (0)203 301 416  
Fax: +49 (0)203 301 10416  
west@krohne.de  
ZIP code: 30000 - 34999, 37000 - 48000, 50000 - 53999, 57000 - 59999, 98000 - 99999

#### Southern sales office

KROHNE Messtechnik GmbH & Co. KG  
Landsberger Str. 392  
D-81241 Munich  
Phone: +49 (0)89 121 5620  
Fax: +49 (0)89 129 6190  
sued@krohne.de  
ZIP code: 0 - 9999, 80000 - 89999, 90000 - 97999

#### Southwestern sales office

KROHNE Messtechnik GmbH & Co. KG  
Rüdesheimer Str. 40  
D-65239 Hochheim/Main  
Phone: +49(0)6146) 827 30  
Fax: +49 (0)6146 827 312  
rhein-main@krohne.de  
ZIP code: 35000 - 36999, 54000 - 56999, 60000 - 79999

#### Instrumentation and control equipment catalog

TABLAR Messtechnik GmbH  
Ludwig-Krohne-Straße 5  
D-47058 Duisburg  
Phone: +49 (0)2 03 305 880  
Fax: +49 (0)2 03 305 8888  
kontakt@tablar.de www.tablar.de

### KROHNE sales companies

### International

#### Australia

KROHNE Australia Pty Ltd  
Quantum Business Park 10/287  
Victoria Rd Rydalmere NSW 2116  
Phone: +61 2 8846 1700  
Fax: +61 2 8846 1755  
krohne@krohne.com.au

#### Austria

KROHNE Gesellschaft m.b.H.  
Modecenterstraße 14  
A-1030 Vienna  
Phone: +43 (0)11/203 45 32  
Fax: +43 (0)11/203 45 32 99  
info@krohne.at

#### Belgium

KROHNE Belgium N.V.  
Brusselstraat 320  
B-1702 Groot Bijgaarden  
Phone: +32 (0)2 4 66 00 10  
Fax: +32 (0)2 4 66 08 00  
krohne@krohne.be

#### Brazil

KROHNE Conaut Controles  
Automaticos Ltda.  
Estrada Das Águas Espraiadas, 230  
C.P. 56 06835 - 080 EMBU - SP  
Phone: +55 (0)11-4785-2700  
Fax: +55 (0)11 4785-2768  
conaut@conaut.com.br

#### China

KROHNE Measurement Instruments  
[Shanghai] Co. Ltd., [KMIC]  
Room 1501  
1033 Zhaojiafang Road  
Shanghai 200030  
Phone: +86 21 6487 9611  
Fax: +86 21 6438 7110  
info@krohne-asia.com

#### Czech Republic

Krohne CZ, spol. s r.o.  
Soběsická 156  
63800 Brno  
Phone: +420 (0)545.242 627  
Fax: +420 (0)545 220 093  
brno@krohne.cz

#### France

KROHNE S.A.S.  
Les Ors BP 98  
F-26103 ROMANS Cedex  
Phone: +33 (0)4 75 05 44 00  
Fax: +33 (0)4 75 05 00 48  
info@krohne.fr

#### Great Britain

KROHNE Ltd.  
Rutherford Drive  
Park Farm Industrial Estate  
Wellingborough  
Northants NN8 6AE  
Phone: +44 (0)19 33 408 500  
Fax: +44 (0)19 33 408 501  
info@krohne.co.uk

#### CIS

Kanex KROHNE Engineering AG  
Business-Centre Planeta  
Office 404 ul.  
Marxistskaja 3  
109147 Moscow/Russia  
Phone: +7 (0)095 911 7165  
Fax: +7 (0)095 742 8873  
krohne@dol.ru

#### India

Krohne Marshall Ltd.  
A-34/35, M.I.D.C. Industrial Area,  
H-Block  
Pimpri Poona 411018  
Phone: +91 (0)202 744 2020  
Fax: +91 (0)202 744 2020  
pcu@vsnl.net

#### Iran

KROHNE Liaison Office  
North Sohrvardi Ave. 26,  
Sarmad St., Apt. #9  
Tehran 15539  
Phone: +9821 8874 5973  
Fax: +9821 8850 1268  
krohne@krohneiran.com

#### Italy

KROHNE Italia Srl.  
Via V. Monti 75  
I-20145 Milan  
Phone: +39 02 4300 661  
Fax: +39 02 4300 6666  
info@krohne.it

#### Korea

KROHNE Korea  
Room 508 Miwon Bldg 43  
Yoido-Dong Youngdeungpo-Ku  
Seoul, Korea  
Phone: 00-82-2-782-1900  
Fax: 00-82-2-780-1749  
mail@krohne.co.kr

#### Netherlands

KROHNE Nederland B.V.  
Kerkeplaat 14  
NL-3313 LC Dordrecht  
Phone: +31 (0)78 630 6200  
Fax: +31 (0)78 630 6405  
Service Direct: +31 (0)78 630 6222  
info@krohne.nl

#### Norway

KROHNE Norway A.S.  
Ekholtveien 114  
NO-1521 Moss  
Phone: +47 (0)69 264 860  
Fax: +47 (0)69 267 333  
postmaster@krohne.no

#### Poland

KROHNE Polska Sp.z.o.o.  
ul. Stary Rynek Oliwski 8a  
80-324 Gdansk  
Phone: +48 (0)58 520 9211  
Fax: +48 (0)58 520 9212  
info@krohne.pl

#### Switzerland

KROHNE AG  
Uferstr. 90  
CH-4019 Basel  
Phone: +41 (0)61 638 30 30  
Fax: +41 (0)61 638 30 40  
info@krohne.ch

#### Singapore

Tokyo Keiso - KROHNE (Singapore)  
Pte. Ltd.  
14, International Business Park,  
Jurong East  
Chiyoda Building, #01-01/02  
Singapore 609922  
Phone: (65) 6567 4548  
Fax: (65) 6567 9874  
tks@tokyokeiso-krohne.com.sg

#### Republic of South Africa

KROHNE Pty. Ltd.  
Bushbuck Close  
Corporate Park South  
Midrand, Gauteng  
P.O. Box 2069  
Midrand, 1685  
Tel.: +27 (0)11 314 1391  
Fax: +27 (0)11 314 1681  
midrand@krohne.co.za

#### Spain

I.I. KROHNE IBERIA, S.r.l.  
Poligono Industrial Nilo  
Calle Brasil, nº. 5  
28806 Alcalá de Henares Madrid  
Phone: +34 (0)91 883 2152  
Fax: +34 (0)91 883 4854  
krohne@krohne.es

#### USA

KROHNE, Inc.  
7 Dearborn Road  
Peabody, MA 01960  
Phone: +1 (800) FLOWING  
Phone: +1 (978) 535 6060 (in MA)  
info@krohne.com

### Representatives

Algeria  
Argentina  
Cameroon  
Canada  
Chile  
Columbia  
Croatia  
Denmark  
Ecuador  
Egypt  
Finland  
Gabon  
Ghana  
Greece  
Hong Kong  
Hungary  
Indonesia  
Iran  
Ireland  
Israel  
Ivory Coast  
Jordan  
Kuwait  
Libya  
Lithuania  
Malaysia  
Mauritius  
Mexico  
Morocco  
New Zealand  
Peru  
Portugal  
Romania  
Saudi Arabia  
Senegal  
Slovakia  
Slovenia  
Sweden  
Taiwan  
Thailand  
Tunisia  
Turkey  
Venezuela  
Yugoslavia

### Other countries

KROHNE Messtechnik GmbH & Co. KG  
Ludwig-Krohne-Str. 5  
D-47058 Duisburg  
Phone: +49 (0)203 301 0  
Fax: +49 (0)203 301 389  
export@krohne.de